



# Fertilize System for Palm Tree (Fe water solubility test)

ArborBioKaps  
Biodegradable Arbor Capsule  
(no oxo-biodegradation and/or not Biopolymers)

rev. 1



# Fertilize System for Palm Tree (Fe water test)

## Introduction

- Description of Fertilize Present Possibilities
- Description of Fertilize System for Palm Tree (Fe water test)
- Imagines of Results
- Conclusion



# Fertilize System for Palm Tree (Fe water test)

## Description Fertilize Present Possibilities



**foliage spray**



**fertirrigation**



**granular fertilizer**

**do you think are better solution for Palm Tree?**



# Fertilize System for Palm Tree (Fe water test)

## Description of ArborBioKaps Fertilizer Solution



*Area HS Palm Tree Pipe Application*

*direct treatment near foliage*

*Less Fertilize quantity*

*Short way to Foliage*



# Fertilize System for Palm Tree (Fe water test)

## Description of Fertilize System for Palm Tree (Fe water test)

### Phase 1

Select Fe Fertilize Substance

### Phase 2

Put Fe water solubility Fertilizer into the HS Palm Tree Pipe

### Phase 3

Put HS Palm tree Pipe into bottle with 1 litre water

### Phase 4

Look results



# Fertilize System for Palm Tree (Fe water test)

## Phase 1

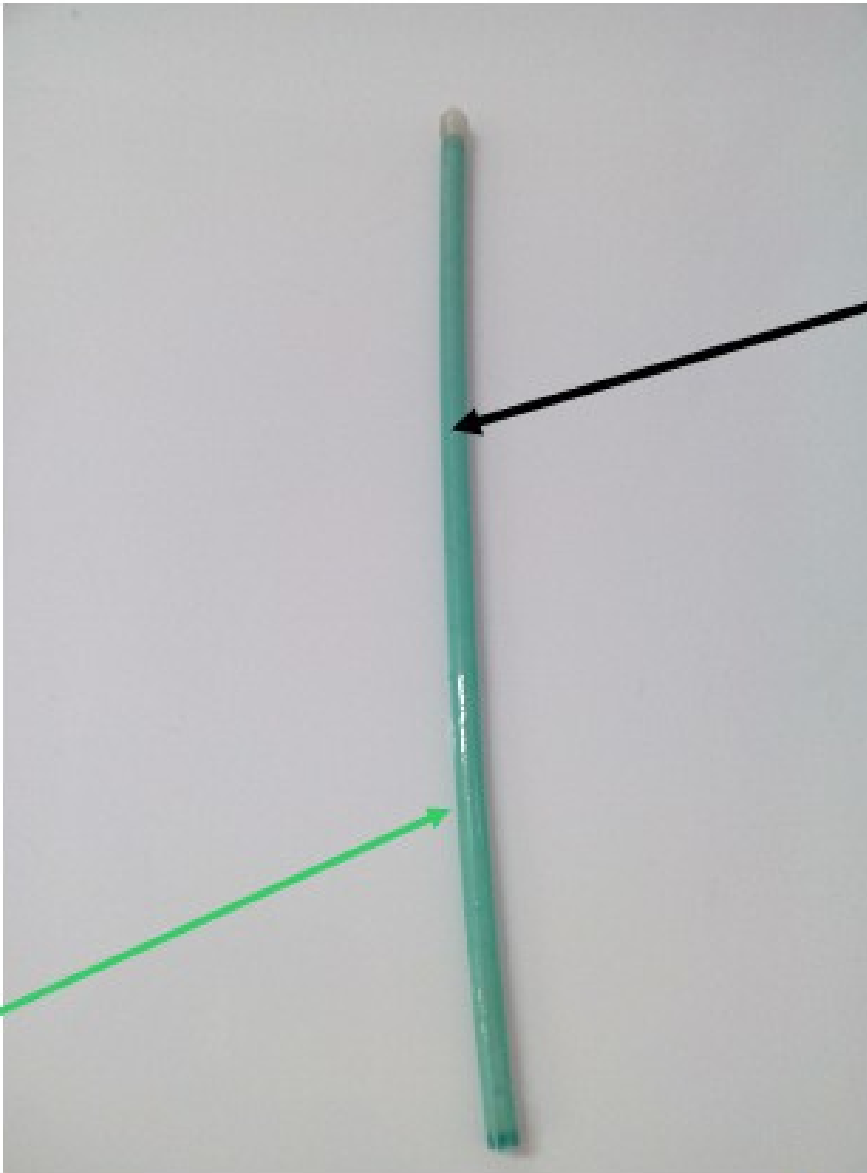


**Fe water soluble  
Fertilize  
(10 grams)**



# Fertilize System for Palm Tree (Fe water test)

## Phase 2



Fe Fertilize  
(10 grams)

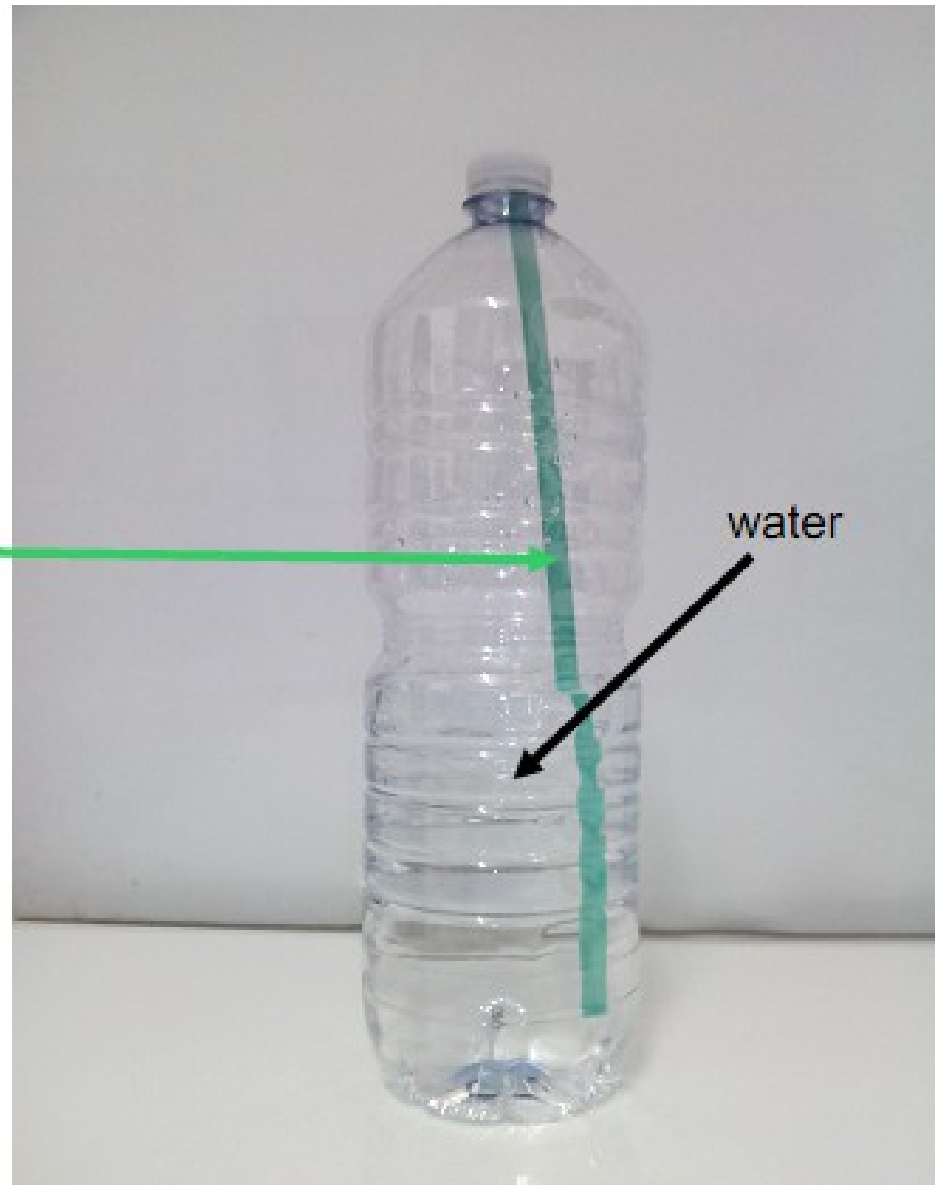
HS Palm Tree Pipe



# Fertilize System for Palm Tree (Fe water test)

## Phase 3

HS Palm tree  
with Fe Fertilize



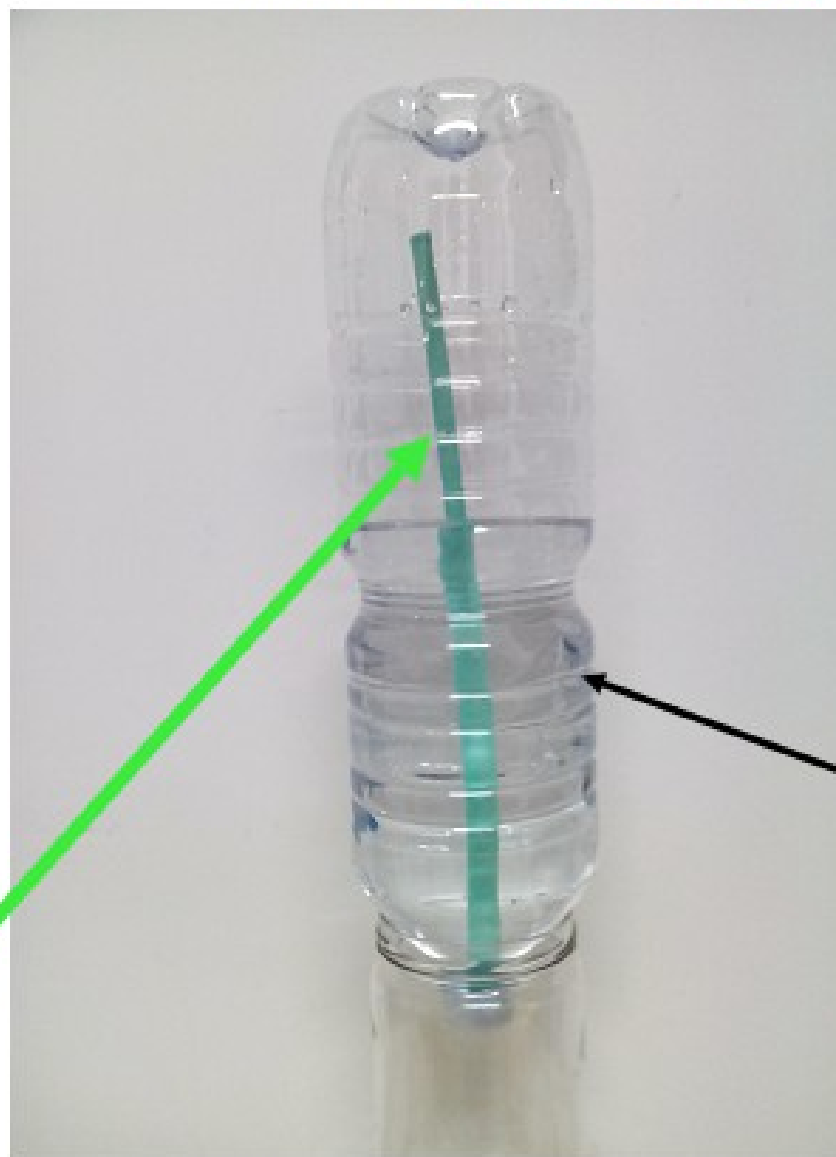
water





# Fertilize System for Palm Tree (Fe water test)

Phase 4 (start condition)



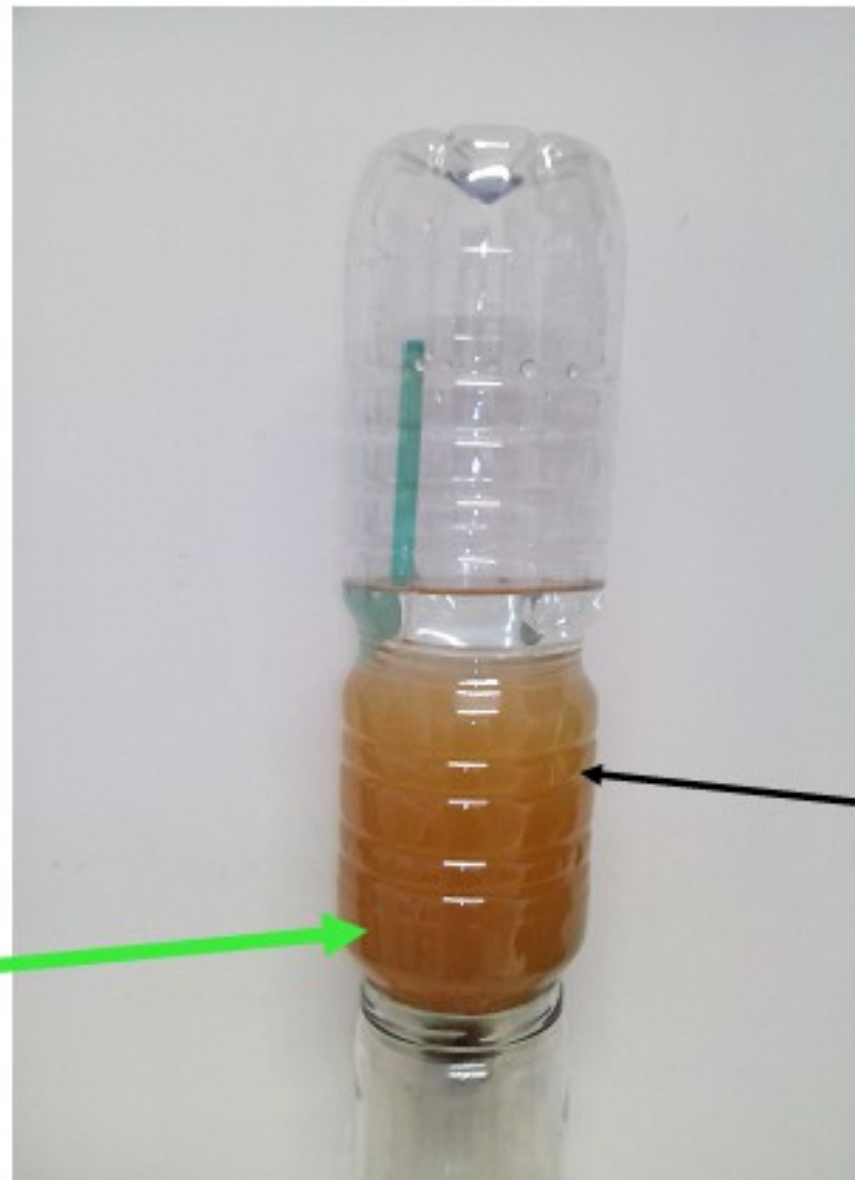
HS Palm Tree Pipe  
with Fe Fertilizer

water



# Fertilize System for Palm Tree (Fe water test)

Phase 4 (after 2 hours)



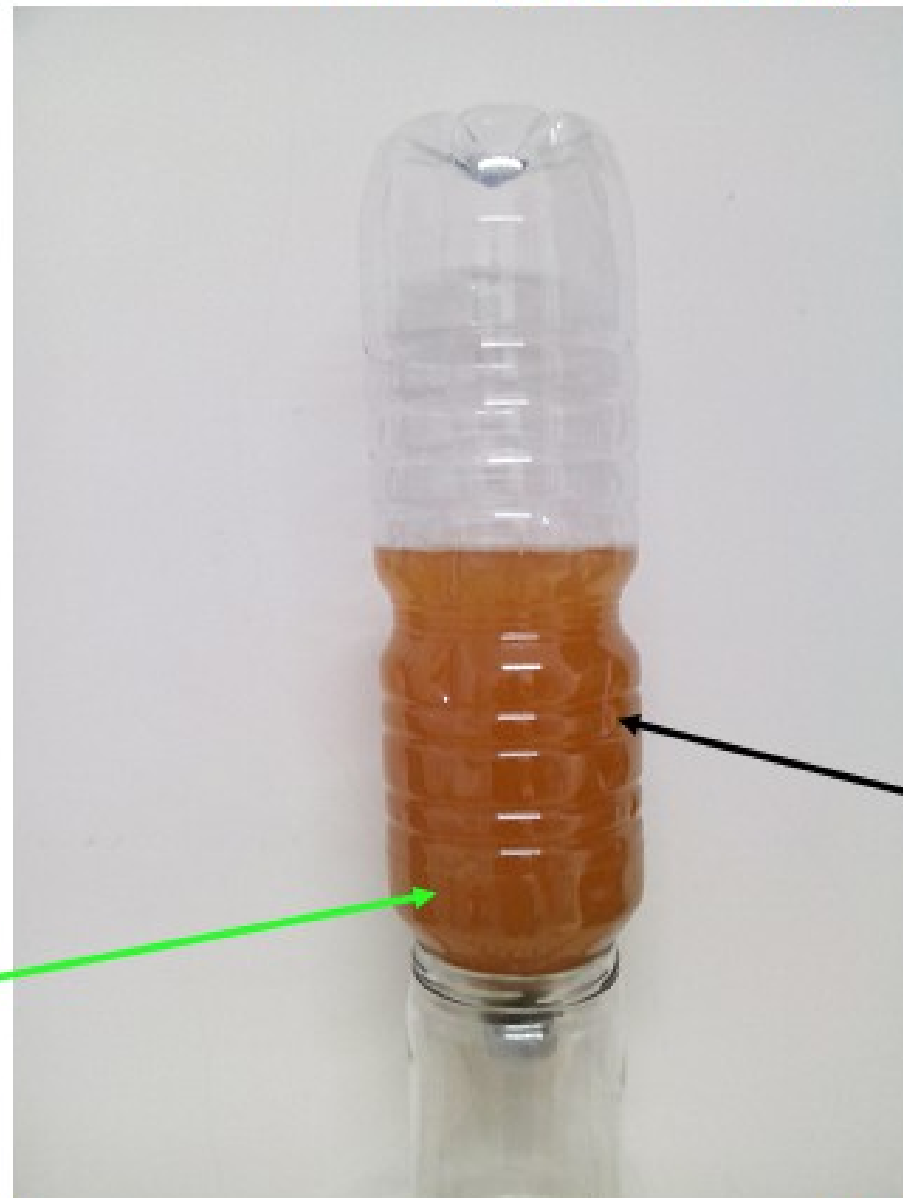
HS Palm Tree Pipe  
50% dissolved  
into the water

Fe Fertilize  
into the water



# Fertilize System for Palm Tree (Fe water test)

Phase 4 (after 6 hours)



HS Palm Tree Pipe  
100% dissolved  
into the water

100% Fe Fertilize  
dissolved  
into the water



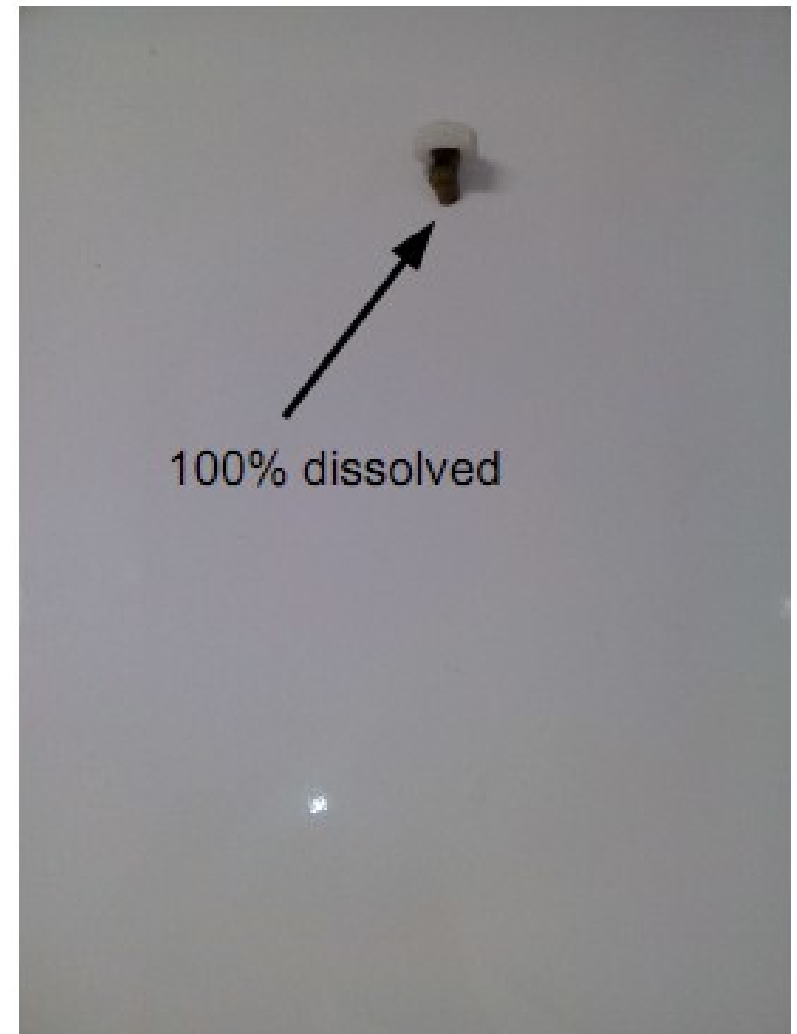
# Fertilize System for Palm Tree (Fe water test)

## Comparison

Start Condition



After 6 hours





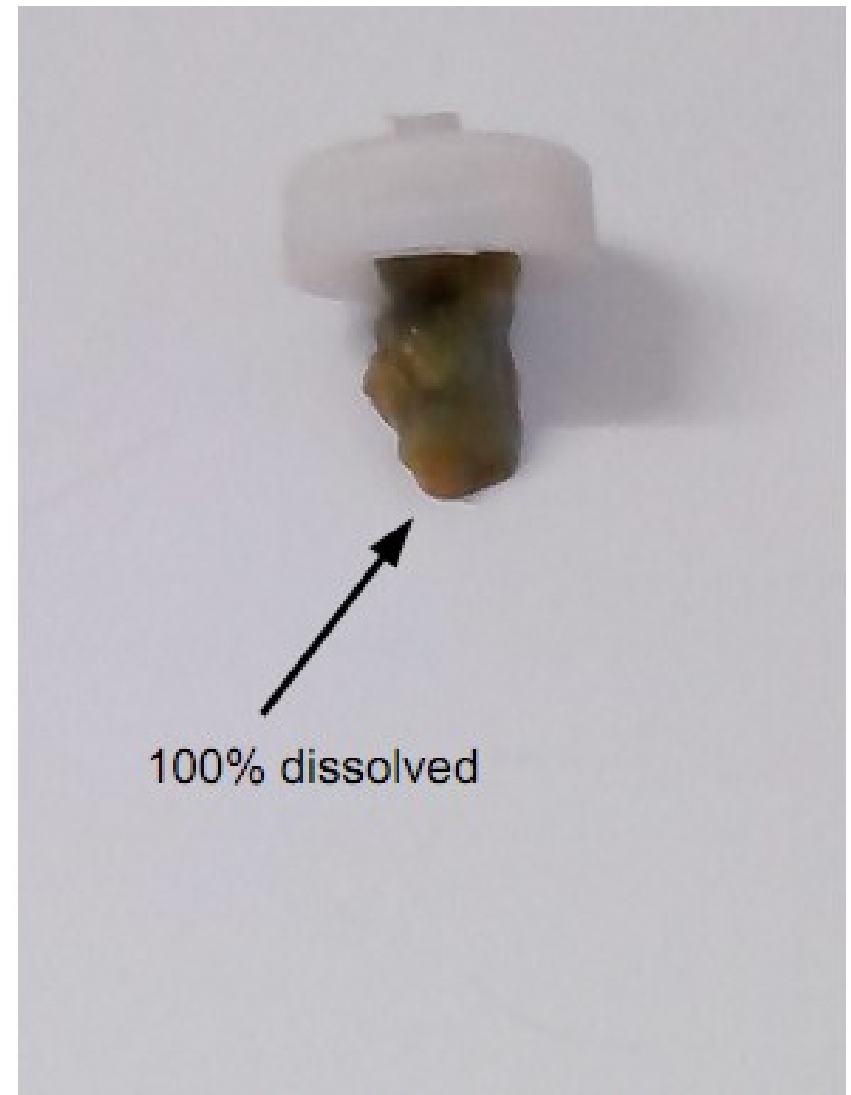
# Fertilize System for Palm Tree (Fe water test)

## Comparison

Start Condition



After 6 hours





# Fertilize System for Palm Tree (Fe water test)

**Where it can be Applied**

**All types of Palm Tree**

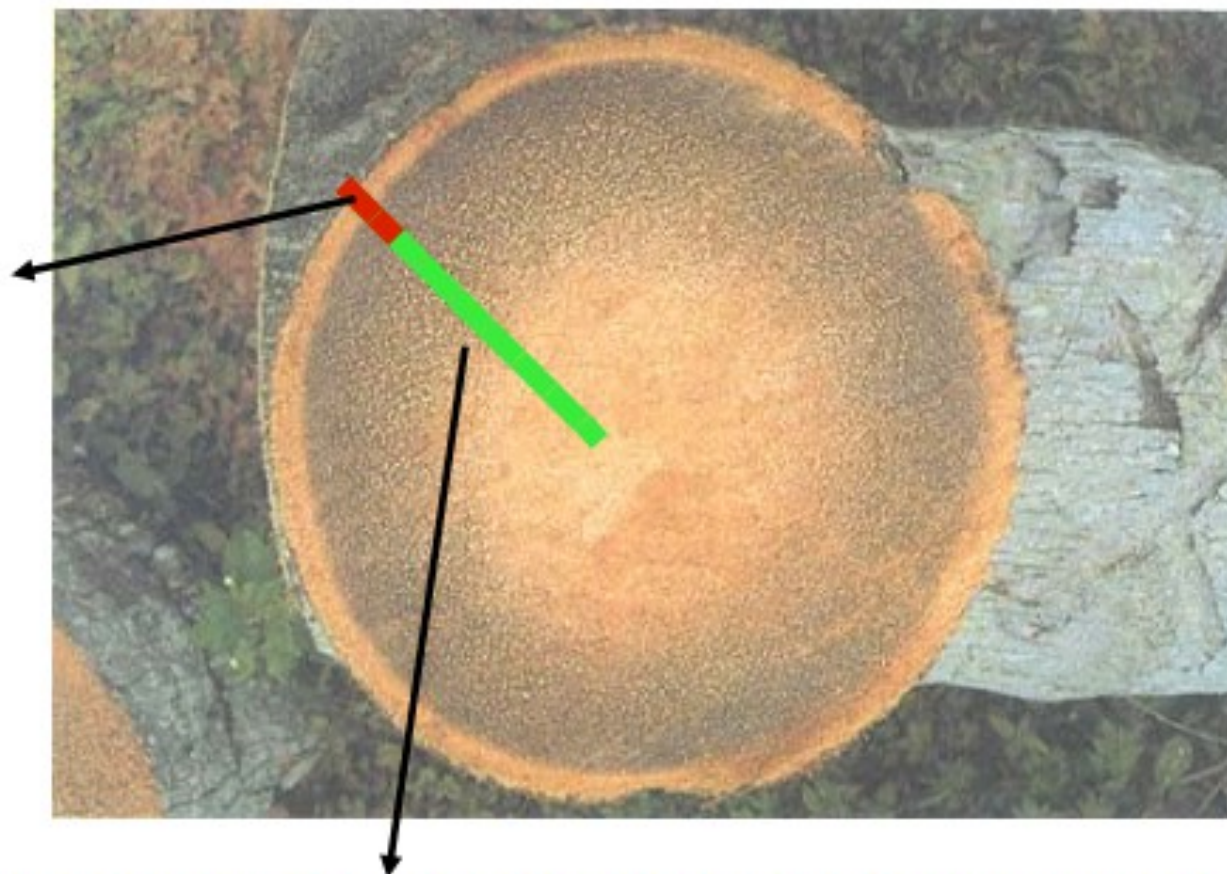




# Fertilize System for Palm Tree (Fe water test)

## SCHEME OF PALM TRUNK INSTALLATION

**ArborBioKaps with Valve  
Necessary to fill HS Palm  
Tree Pipe will melt  
in 8/12 months\***



**HS Palm Tree Pipe after filled with Fertilize substances  
will melt at 100% inside palm tree stems**

\*time depending from weather condition and from speed sap absorption from all different kind of Palm



# Fertilize System for Palm Tree (Fe water test)

## CONCLUSION

ArborBioKaps HS Palm Tree Pipe is unique solution to introduce Fertilize substances into the Palm Tree with follows advantages:

- 1 – 100% assurance absorption of substances to all line of hole after dissolved of Pipe
- 2 – 100% closed substance into Palm tree trunk
- 3 – ***direct treatment near foliage***
- 4 – nothing visual appearance (nothing apparatus appended outside trunk)
- 5 – safety to worker and citizen
- 6 – covered against bacteria and fungi through antibacterial additive inside ArborBioKaps

then.....





# Fertilize System for Palm Tree (Fe water test)

**NUTRE YOUR PALM TREES WITH**



**100% FRIENDLY SOLUTION, 100% SAFETY SOLUTION, 100% FAST SOLUTION  
100% NICE AESTHETIC SOLUTION, 100% LESS INVASIVE TRUNK SOLUTION**



# Fertilize System for Palm Tree (Fe water test)

**NUTRE WITH**

